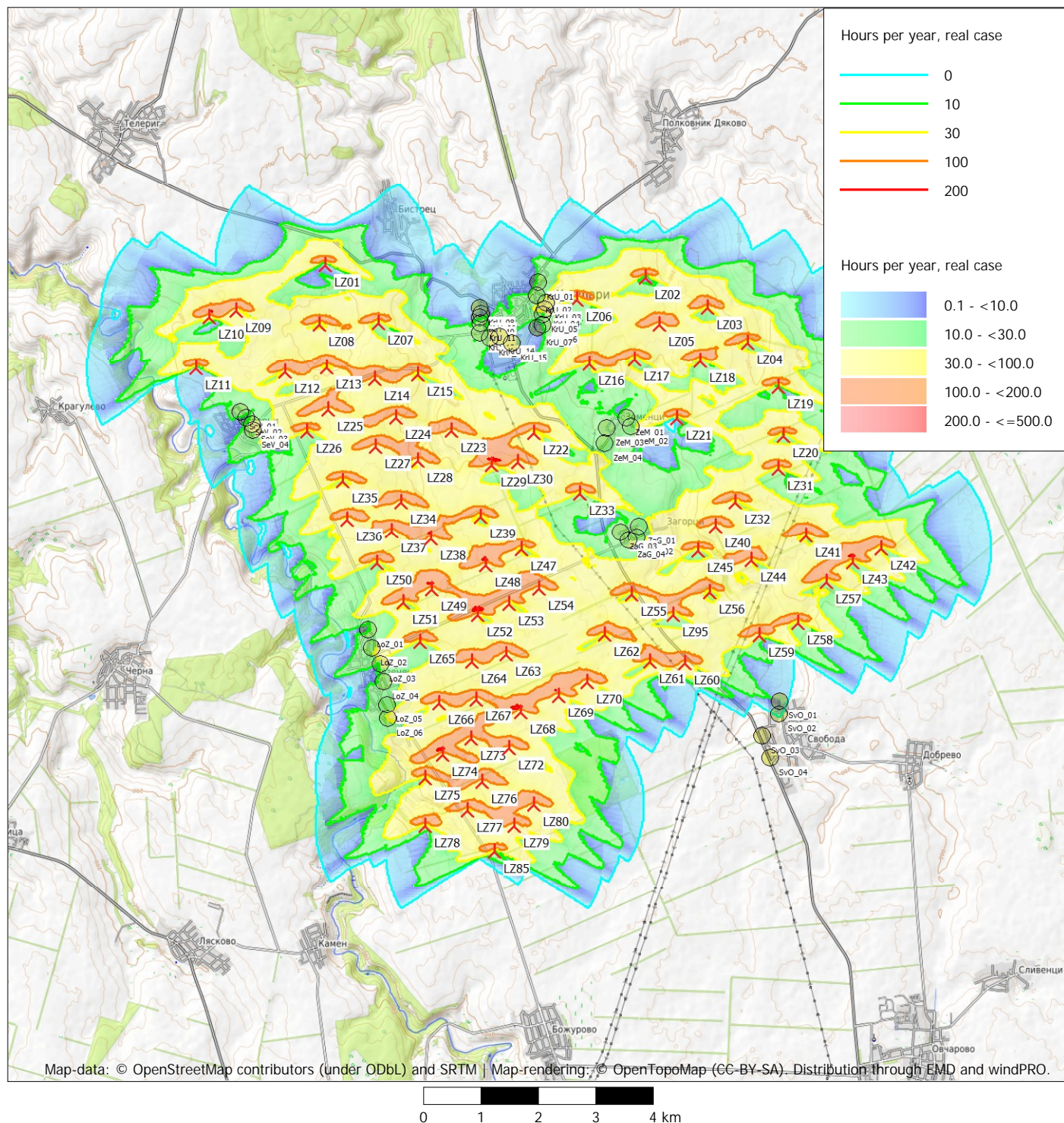


## SHADOW - Map

Calculation: Real Case



New WTG

Map: OpenTopoMap, Print scale 1:100,000, Map center Geo WGS84 East: 27.759901° E North: 43.779962° N  
Shadow receptor  
Flicker map level: Project Wizard Elevation Data Grid (EU-DEM: Pan-European DSM - 25m grid - Version 1.1)  
Time step: 3 minutes, Day step: 7 days, Map resolution: 20 m, Visibility resolution: 10 m, Eye height: 1.5 m